

IT IS ILLEGAL TO REMOVE OR HARM ANY HISTORICAL OR ARCHAEOLOGICAL MATERIALS ON PUBLIC LANDS.

## Selected China Gulch 2008 Artifact Photos

Before intensive  
cleaning.



Brass button with original threading intact  
China Gulch, Hearth 1, Unit 3, Level 1 (0-10cm)

After intensive  
cleaning.



PLEASE HELP US ENSURE THAT ALL THE ARTIFACTS ON PUBLIC LANDS CAN TELL US THEIR  
STORY ABOUT THE PAST

IT IS ILLEGAL TO REMOVE OR HARM ANY HISTORICAL OR ARCHAEOLOGICAL MATERIALS ON PUBLIC LANDS.

Before intensive cleaning.



Brass button with original threading intact.  
China Gulch, Hearth 1, Unit 3, Level 1 (0-10cm)

After intensive cleaning.



PLEASE HELP US ENSURE THAT ALL THE ARTIFACTS ON PUBLIC LANDS CAN TELL US THEIR STORY ABOUT THE PAST

IT IS ILLEGAL TO REMOVE OR HARM ANY HISTORICAL OR ARCHAEOLOGICAL MATERIALS ON PUBLIC LANDS.



Porcelain “Prosser” buttons  
China Gulch, Hearth 1, Unit 3, Level 2 (10-20cm)



PLEASE HELP US ENSURE THAT ALL THE ARTIFACTS ON PUBLIC LANDS CAN TELL US THEIR STORY ABOUT THE PAST

IT IS ILLEGAL TO REMOVE OR HARM ANY HISTORICAL OR ARCHAEOLOGICAL MATERIALS ON  
PUBLIC LANDS.



White porcelain bead  
China Gulch, Hearth 1, Unit 2, Level 1 (0-10cm)

PLEASE HELP US ENSURE THAT ALL THE ARTIFACTS ON PUBLIC LANDS CAN TELL US THEIR  
STORY ABOUT THE PAST

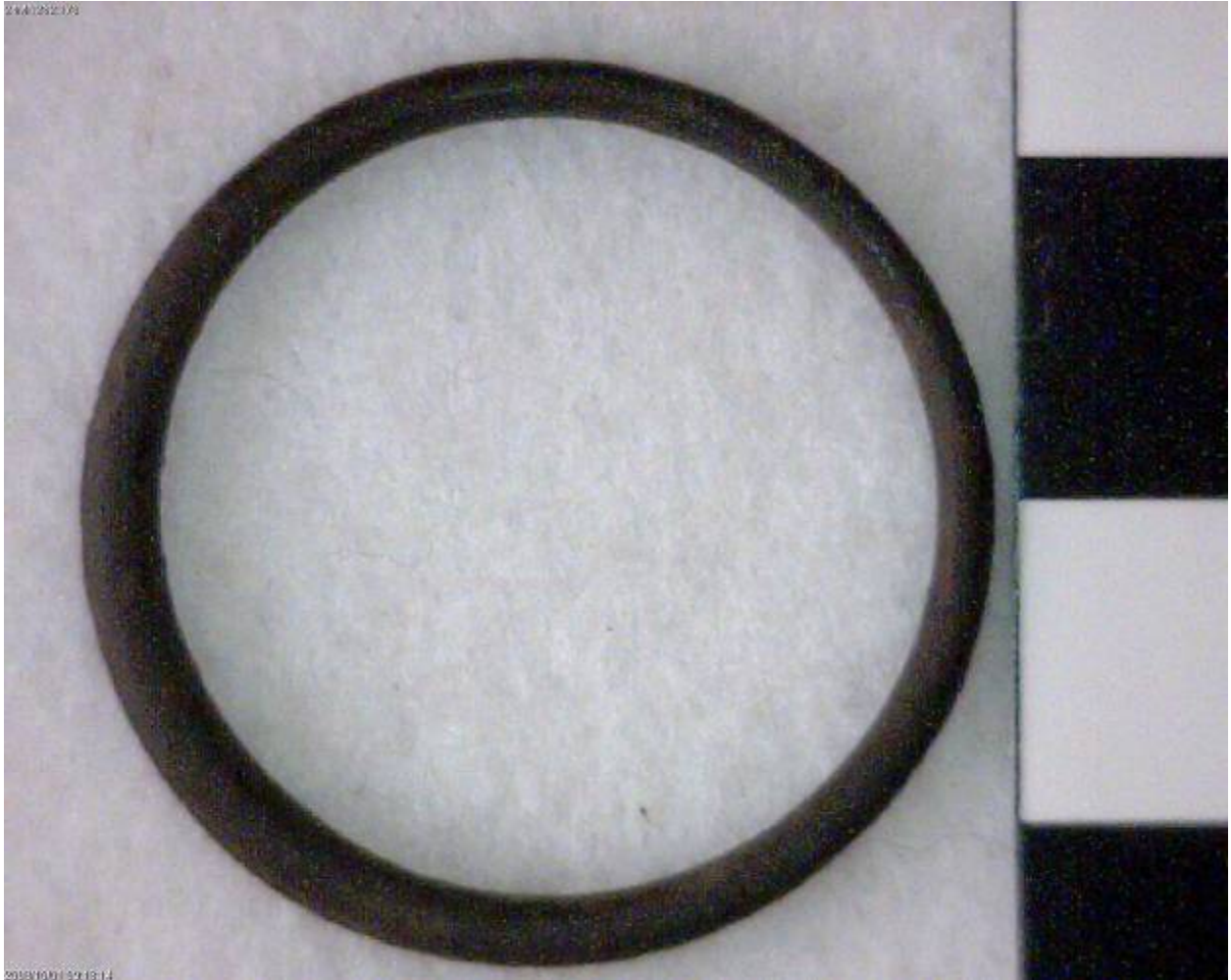
IT IS ILLEGAL TO REMOVE OR HARM ANY HISTORICAL OR ARCHAEOLOGICAL MATERIALS ON PUBLIC LANDS.



Brass shoe eyelet  
China Gulch, Unit 2, Level 1 (0-10cm)

PLEASE HELP US ENSURE THAT ALL THE ARTIFACTS ON PUBLIC LANDS CAN TELL US THEIR STORY ABOUT THE PAST

IT IS ILLEGAL TO REMOVE OR HARM ANY HISTORICAL OR ARCHAEOLOGICAL MATERIALS ON PUBLIC LANDS.



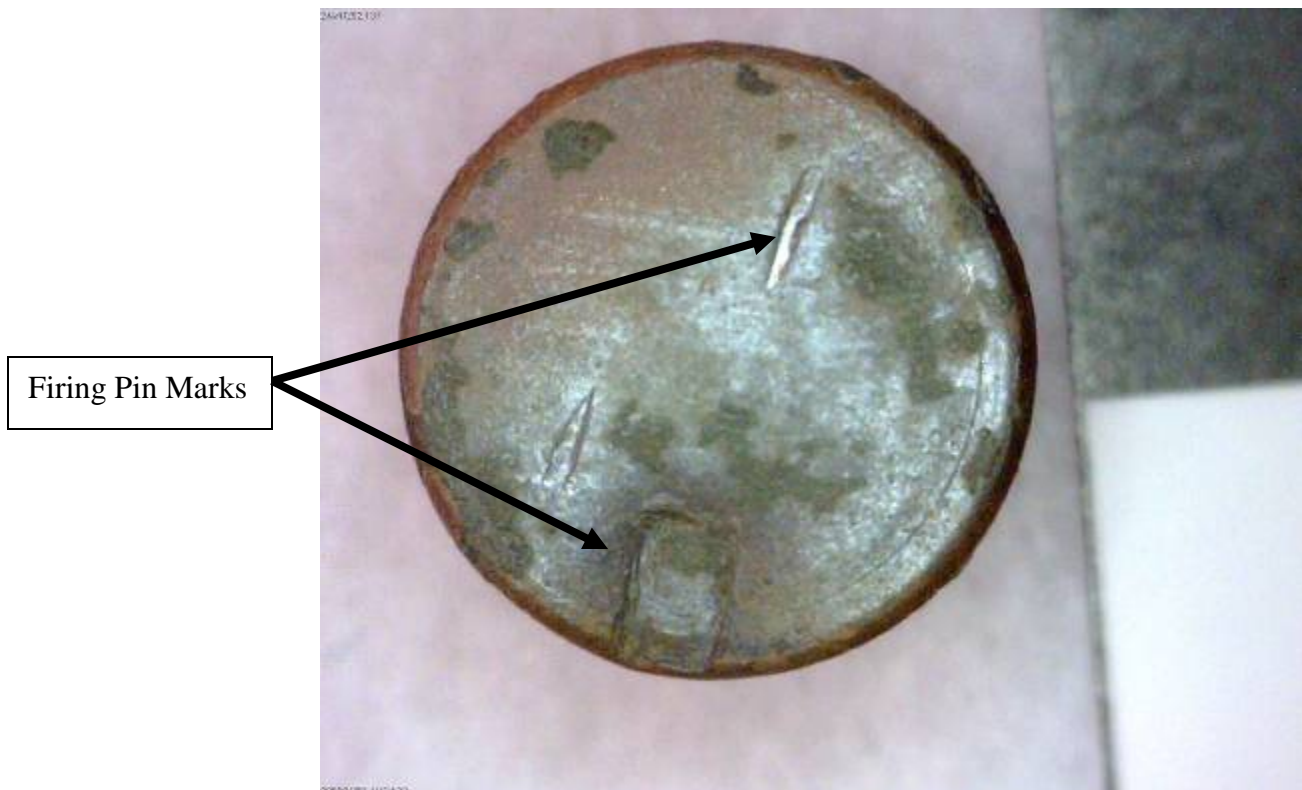
Brass O-Ring, undetermined function  
China Gulch, Hearth 1, Unit 2, Level 2 (10-20cm)

PLEASE HELP US ENSURE THAT ALL THE ARTIFACTS ON PUBLIC LANDS CAN TELL US THEIR  
STORY ABOUT THE PAST

IT IS ILLEGAL TO REMOVE OR HARM ANY HISTORICAL OR ARCHAEOLOGICAL MATERIALS ON PUBLIC LANDS.



.32 Caliber Rimfire Casing.  
China Gulch, Hearth 1, Unit 2, Level 1 (0-10cm)



PLEASE HELP US ENSURE THAT ALL THE ARTIFACTS ON PUBLIC LANDS CAN TELL US THEIR STORY ABOUT THE PAST

IT IS ILLEGAL TO REMOVE OR HARM ANY HISTORICAL OR ARCHAEOLOGICAL MATERIALS ON PUBLIC LANDS.



Small Finishing Nail or Shoe Tack  
China Gulch, Hearth 1, Unit 2, Level 1 (0-10cm)

PLEASE HELP US ENSURE THAT ALL THE ARTIFACTS ON PUBLIC LANDS CAN TELL US THEIR  
STORY ABOUT THE PAST

IT IS ILLEGAL TO REMOVE OR HARM ANY HISTORICAL OR ARCHAEOLOGICAL MATERIALS ON PUBLIC LANDS.



“H. Piper & Co. Rheims”  
Lead Foil Seal for Imported French  
Champagne or Wine Bottle  
China Gulch, Unit 2, Level 1 (0-10cm)

PLEASE HELP US ENSURE THAT ALL THE ARTIFACTS ON PUBLIC LANDS CAN TELL US THEIR  
STORY ABOUT THE PAST

IT IS ILLEGAL TO REMOVE OR HARM ANY HISTORICAL OR ARCHAEOLOGICAL MATERIALS ON PUBLIC LANDS.



Small four-piece mold bottle (1850s-1870s)  
China Gulch, Hearth 4, Unit 1, Level 2 (10-20cm)

PLEASE HELP US ENSURE THAT ALL THE ARTIFACTS ON PUBLIC LANDS CAN TELL US THEIR  
STORY ABOUT THE PAST