

IT IS ILLEGAL TO REMOVE OR HARM ANY HISTORICAL OR ARCHAEOLOGICAL MATERIALS ON
PUBLIC LANDS.

Selected Louisville 2008 Artifact Photos



**Mother-of-Pearl Shell Button
Louisville, Unit 4, Level 2
(10-20cm below surface)**

PLEASE HELP US ENSURE THAT ALL THE ARTIFACTS ON PUBLIC LANDS CAN TELL US THEIR
STORY ABOUT THE PAST

IT IS ILLEGAL TO REMOVE OR HARM ANY HISTORICAL OR ARCHAEOLOGICAL MATERIALS ON PUBLIC LANDS.



Brass Shoe Tack (probably held on a heel)
Unit 5, Level 2
(10-20cm below surface)

PLEASE HELP US ENSURE THAT ALL THE ARTIFACTS ON PUBLIC LANDS CAN TELL US THEIR STORY ABOUT THE PAST

IT IS ILLEGAL TO REMOVE OR HARM ANY HISTORICAL OR ARCHAEOLOGICAL MATERIALS ON
PUBLIC LANDS.



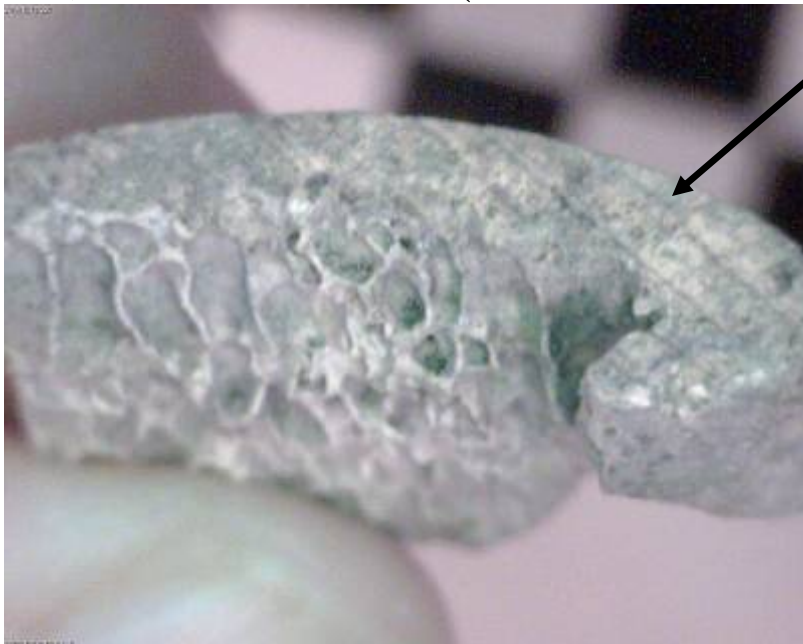
Fragment of Brass Opium Can
Louiseville, Unit 6, Level 1
(0-10cm below surface)

PLEASE HELP US ENSURE THAT ALL THE ARTIFACTS ON PUBLIC LANDS CAN TELL US THEIR
STORY ABOUT THE PAST

IT IS ILLEGAL TO REMOVE OR HARM ANY HISTORICAL OR ARCHAEOLOGICAL MATERIALS ON PUBLIC LANDS.



Rib Fragment, Shows Saw Marks on top edge
Louiseville, Unit 6 Level 1 (0-10cm below surface)



Lines are from the saw used to butcher bone.

PLEASE HELP US ENSURE THAT ALL THE ARTIFACTS ON PUBLIC LANDS CAN TELL US THEIR STORY ABOUT THE PAST

IT IS ILLEGAL TO REMOVE OR HARM ANY HISTORICAL OR ARCHAEOLOGICAL MATERIALS ON PUBLIC LANDS.



Unfused end of a long bone of a Mammal
This means that this was a young animal, possibly a
domestic pig, or a wild deer.
Louiseville, Unit 5, Level 2
(10-20cm below surface)

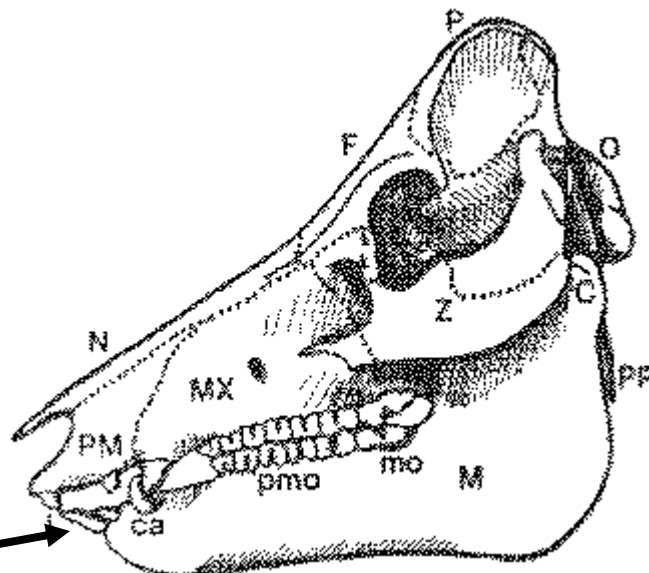
PLEASE HELP US ENSURE THAT ALL THE ARTIFACTS ON PUBLIC LANDS CAN TELL US THEIR
STORY ABOUT THE PAST

IT IS ILLEGAL TO REMOVE OR HARM ANY HISTORICAL OR ARCHAEOLOGICAL MATERIALS ON PUBLIC LANDS.



Domestic Pig Tooth, lower jaw
Louiseville, Unit 5, Level 2
(10-20 cm below surface)

Drawing of a domestic pig skull, and arrow denotes location of discovered tooth.



PLEASE HELP US ENSURE THAT ALL THE ARTIFACTS ON PUBLIC LANDS CAN TELL US THEIR STORY ABOUT THE PAST

IT IS ILLEGAL TO REMOVE OR HARM ANY HISTORICAL OR ARCHAEOLOGICAL MATERIALS ON PUBLIC LANDS.



Filler Hole for a Chinese Spouted Jar (Soy Pot)
Louiseville, Unit 6,
Level 2 (10-20 cm below surface)

Filler hole
on a whole
example of
a spouted
jar.



PLEASE HELP US ENSURE THAT ALL THE ARTIFACTS ON PUBLIC LANDS CAN TELL US THEIR
STORY ABOUT THE PAST

IT IS ILLEGAL TO REMOVE OR HARM ANY HISTORICAL OR ARCHAEOLOGICAL MATERIALS ON PUBLIC LANDS.



Chinese porcelain cup, “Four Season’s” design
Louisville, Unit 5, Level 2
(10-20cm below surface)

PLEASE HELP US ENSURE THAT ALL THE ARTIFACTS ON PUBLIC LANDS CAN TELL US THEIR STORY ABOUT THE PAST

IT IS ILLEGAL TO REMOVE OR HARM ANY HISTORICAL OR ARCHAEOLOGICAL MATERIALS ON PUBLIC LANDS.



Chinese Celadon Bowl Fragments
Louiseville, Unit 5, Level 2
(10-20cm below surface)

PLEASE HELP US ENSURE THAT ALL THE ARTIFACTS ON PUBLIC LANDS CAN TELL US THEIR
STORY ABOUT THE PAST

IT IS ILLEGAL TO REMOVE OR HARM ANY HISTORICAL OR ARCHAEOLOGICAL MATERIALS ON PUBLIC LANDS.



Opium Bowl Fragments (different styles of bowl)
Louisville, Unit 5, Level 2 (10-20cm below surf.)



PLEASE HELP US ENSURE THAT ALL THE ARTIFACTS ON PUBLIC LANDS CAN TELL US THEIR STORY ABOUT THE PAST

IT IS ILLEGAL TO REMOVE OR HARM ANY HISTORICAL OR ARCHAEOLOGICAL MATERIALS ON PUBLIC LANDS.



Black “Weiqi” or “Go” Piece
Louiseville, Unit 5, Level 2
(10-20cm below surface)

Traditional Chinese game of “Weiqi” or commonly known by the Japanese name of “Go”



PLEASE HELP US ENSURE THAT ALL THE ARTIFACTS ON PUBLIC LANDS CAN TELL US THEIR STORY ABOUT THE PAST

IT IS ILLEGAL TO REMOVE OR HARM ANY HISTORICAL OR ARCHAEOLOGICAL MATERIALS ON PUBLIC LANDS.



Pocket knife with tortoiseshell inlay
Louisville, Unit 5, Level 2 (10-20cm)



PLEASE HELP US ENSURE THAT ALL THE ARTIFACTS ON PUBLIC LANDS CAN TELL US THEIR STORY ABOUT THE PAST

IT IS ILLEGAL TO REMOVE OR HARM ANY HISTORICAL OR ARCHAEOLOGICAL MATERIALS ON PUBLIC LANDS.



Enameled Tin Plate
Louisville, Unit 5, Level 2 (10-20cm)

PLEASE HELP US ENSURE THAT ALL THE ARTIFACTS ON PUBLIC LANDS CAN TELL US THEIR
STORY ABOUT THE PAST

IT IS ILLEGAL TO REMOVE OR HARM ANY HISTORICAL OR ARCHAEOLOGICAL MATERIALS ON PUBLIC LANDS.



Half of a blue clay poker chip
Louisville, Unit 6, Level 1 (0-10cm)

PLEASE HELP US ENSURE THAT ALL THE ARTIFACTS ON PUBLIC LANDS CAN TELL US THEIR STORY ABOUT THE PAST