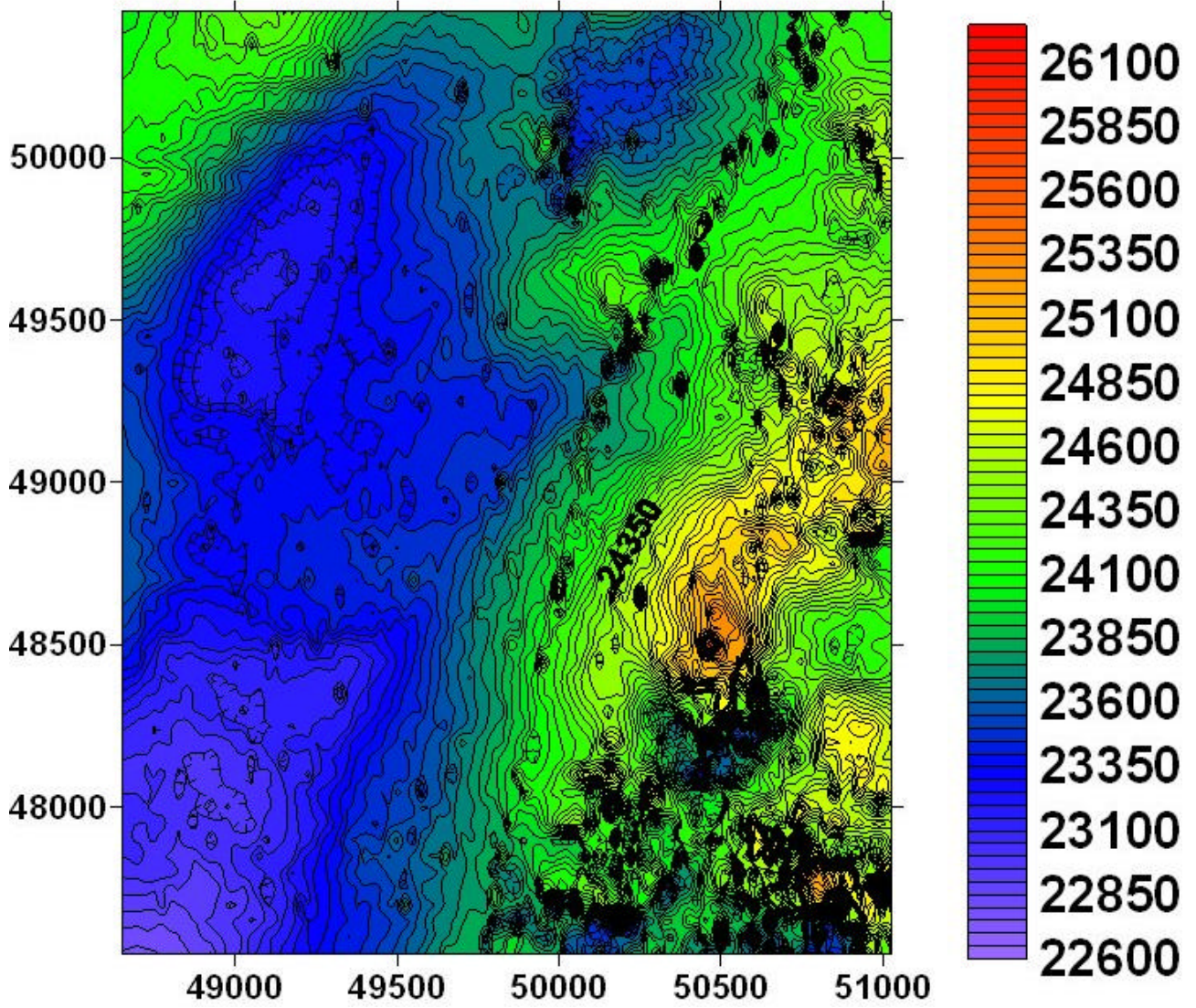
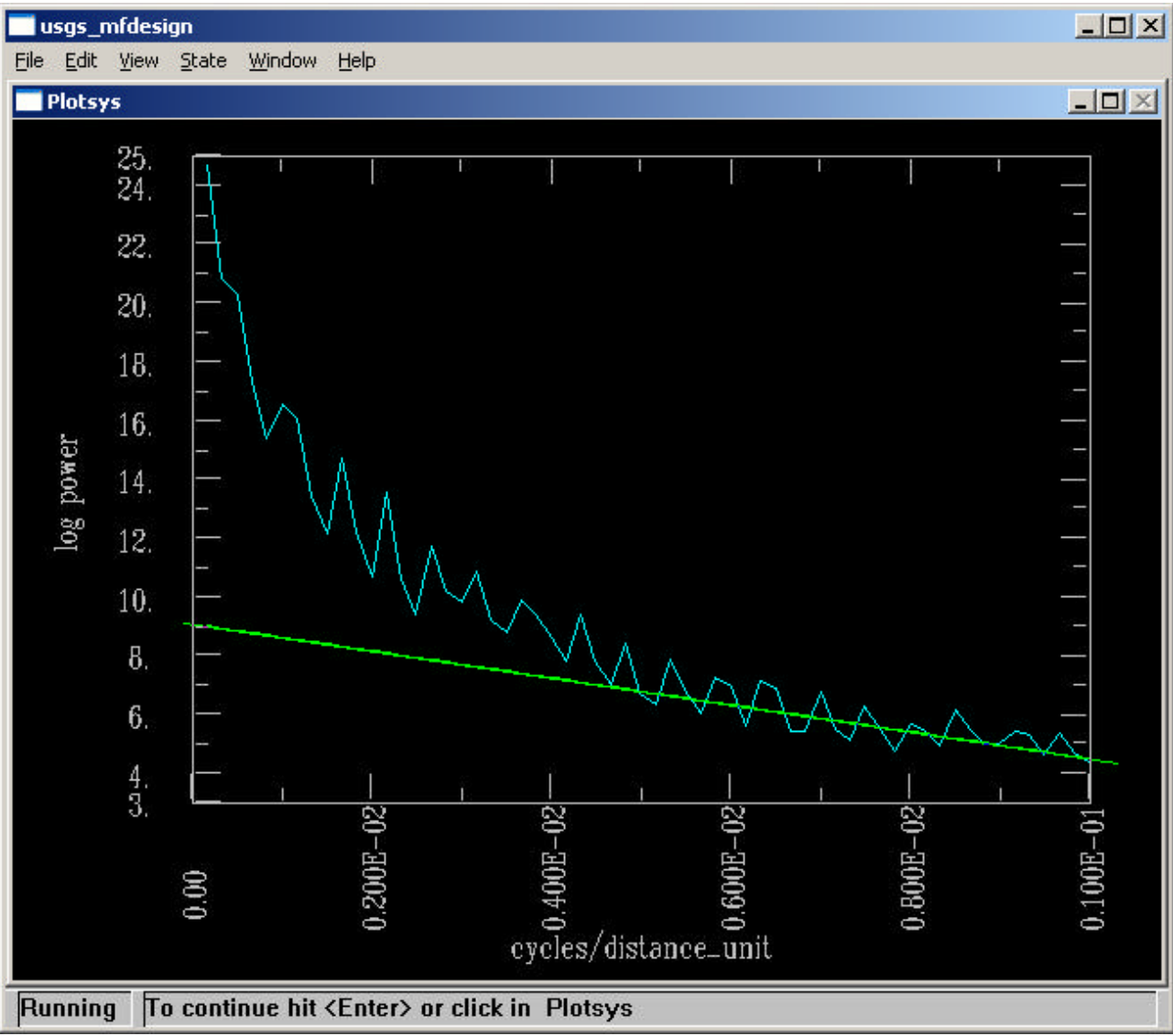


Original unfiltered magnetics

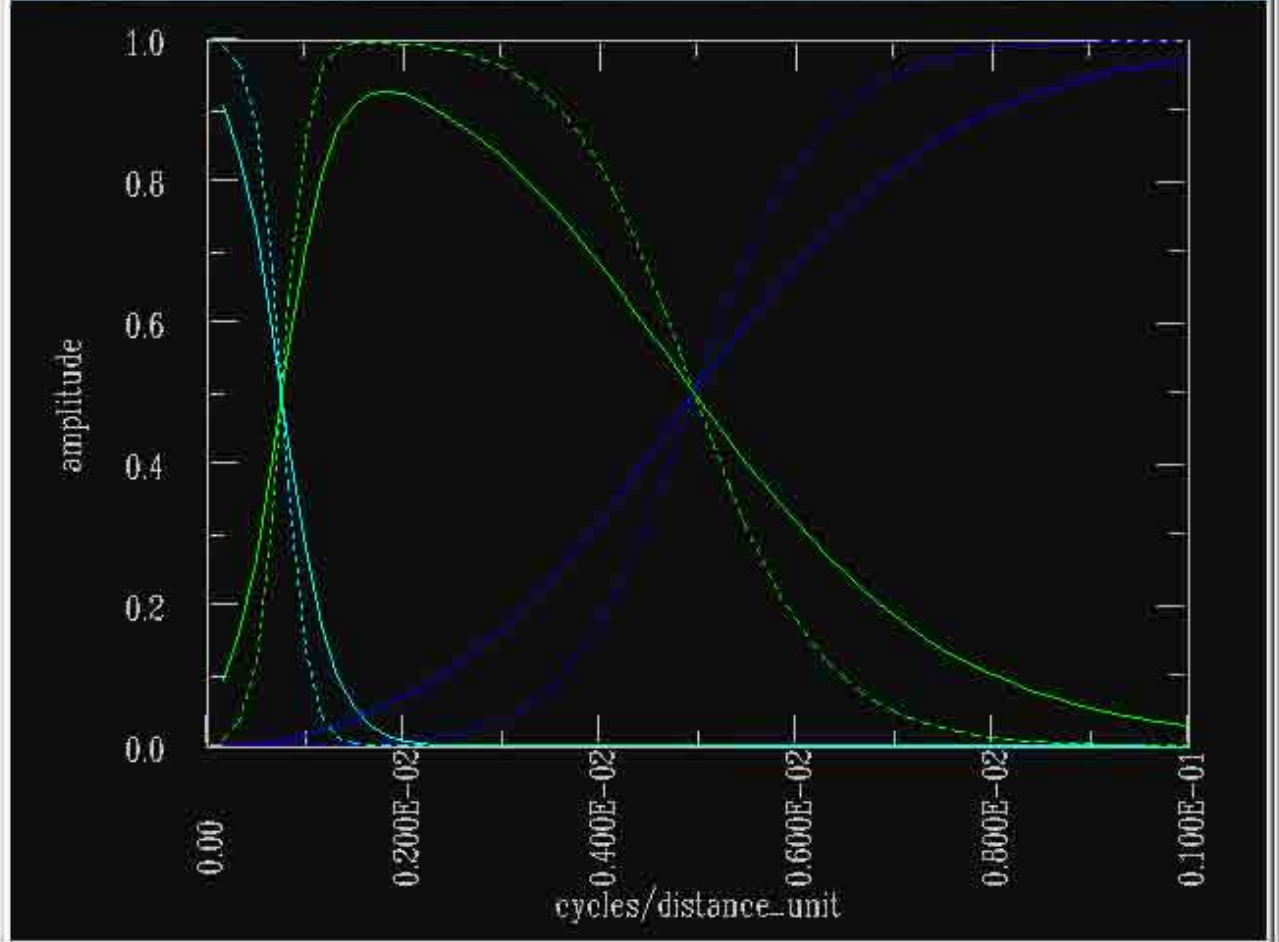




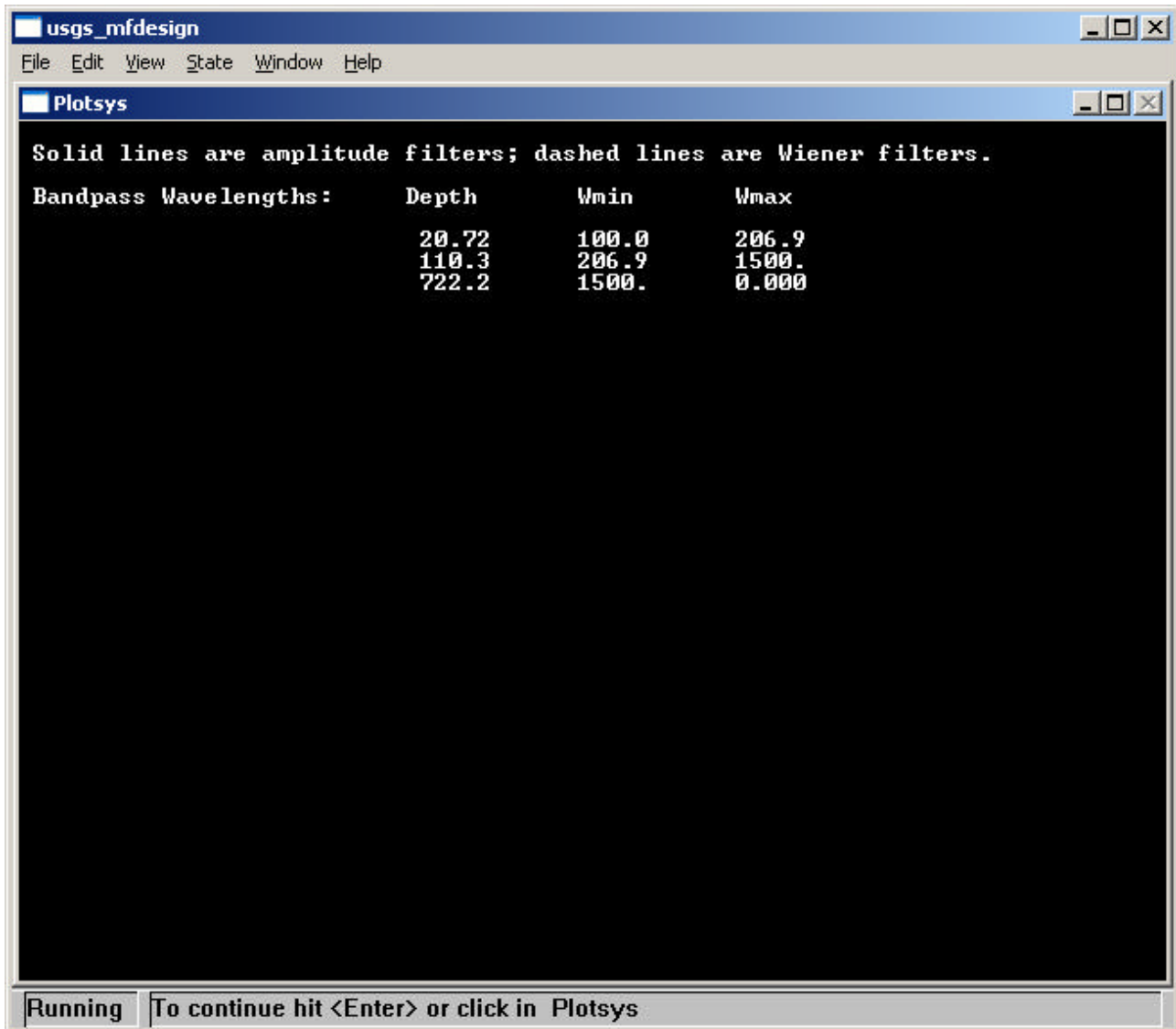
usgs_mfdesign

File Edit View State Window Help

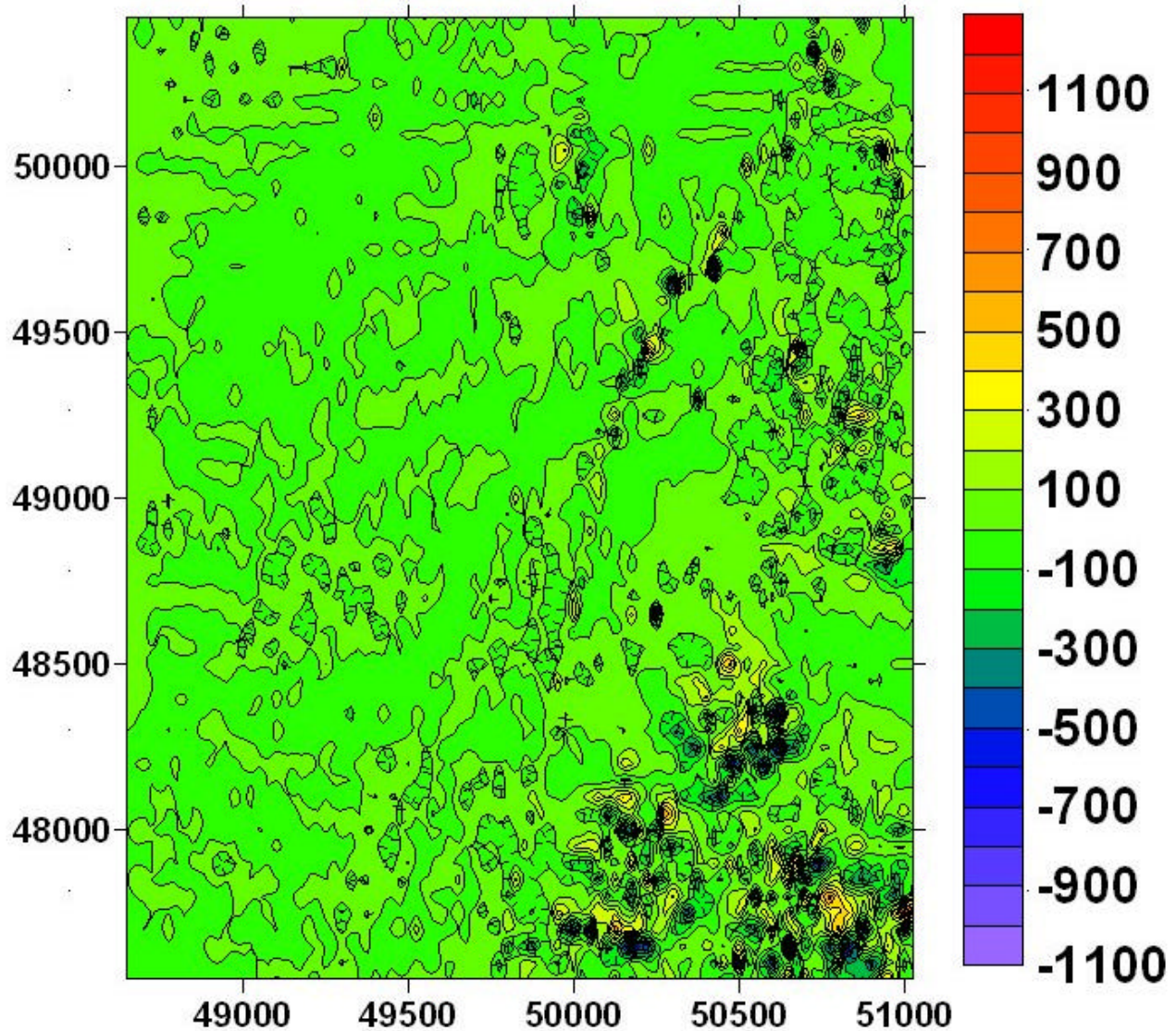
Plotsys



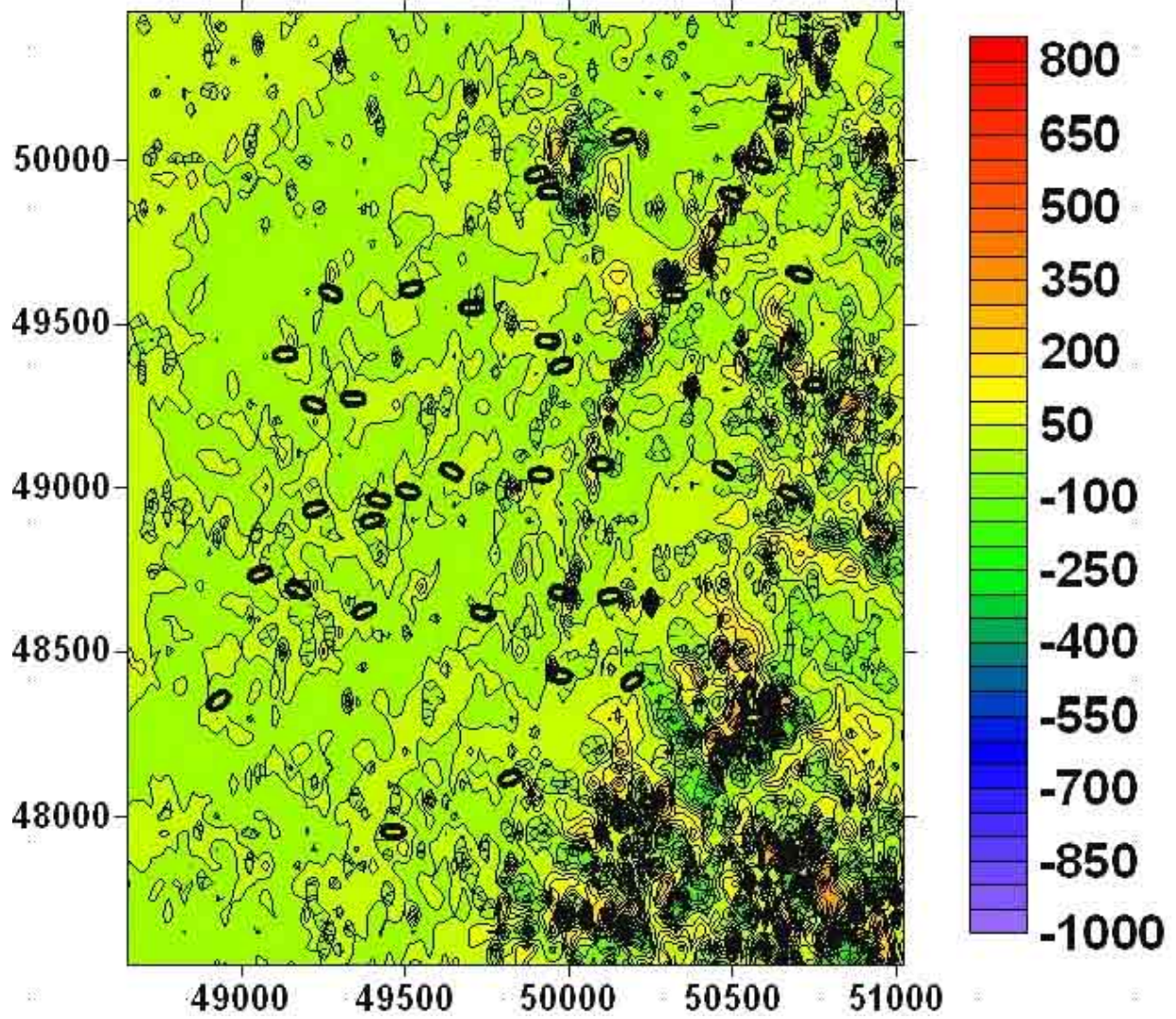
Running To continue hit <Enter> or click in Plotsys



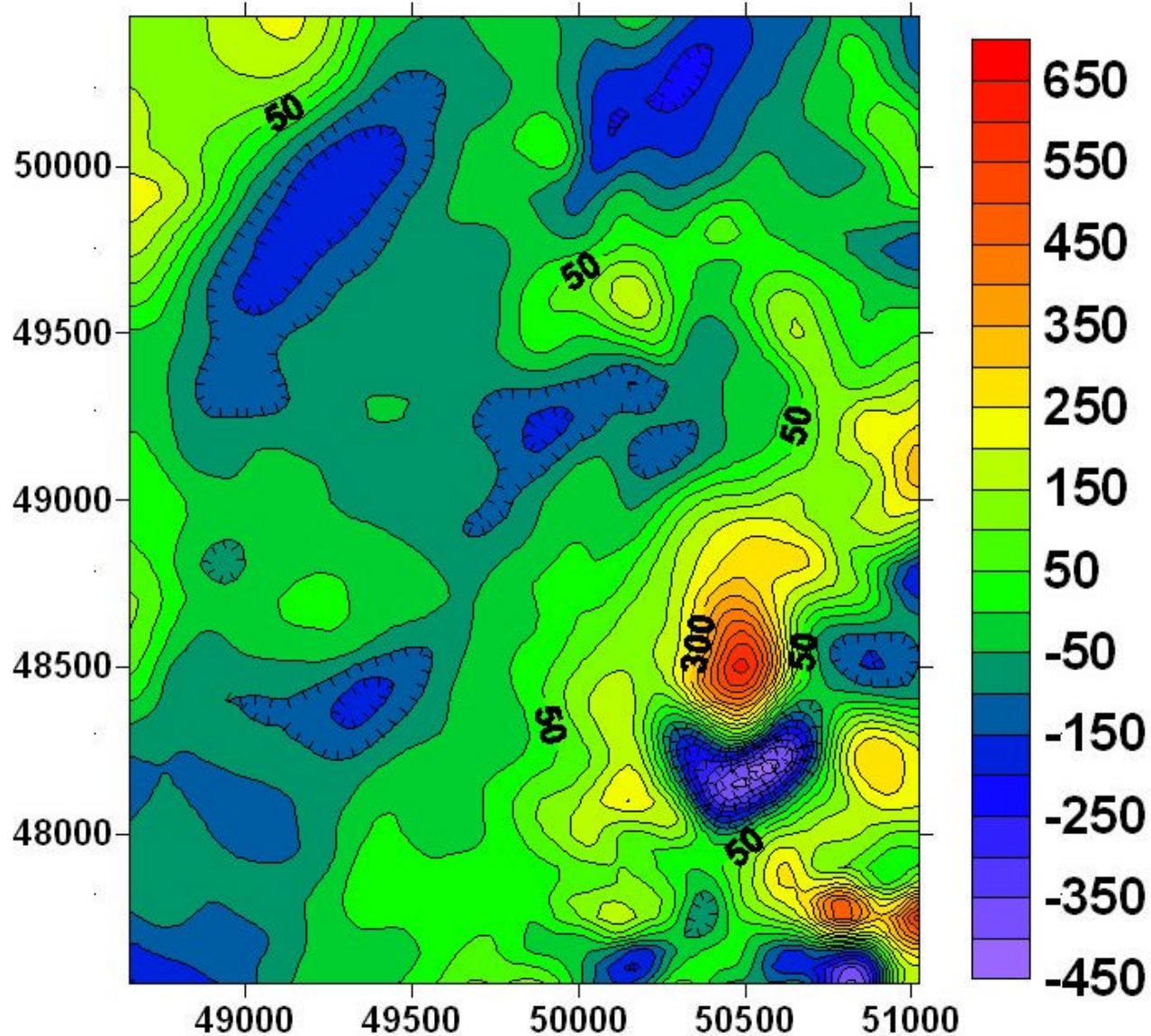
Magnetic signal from equivalent source layer at a depth of about 11 meters (mfilt 33). Note the contribution from the acquisition problem (E-W herringbone), the high frequency anomalies at the eastern side, and the road.



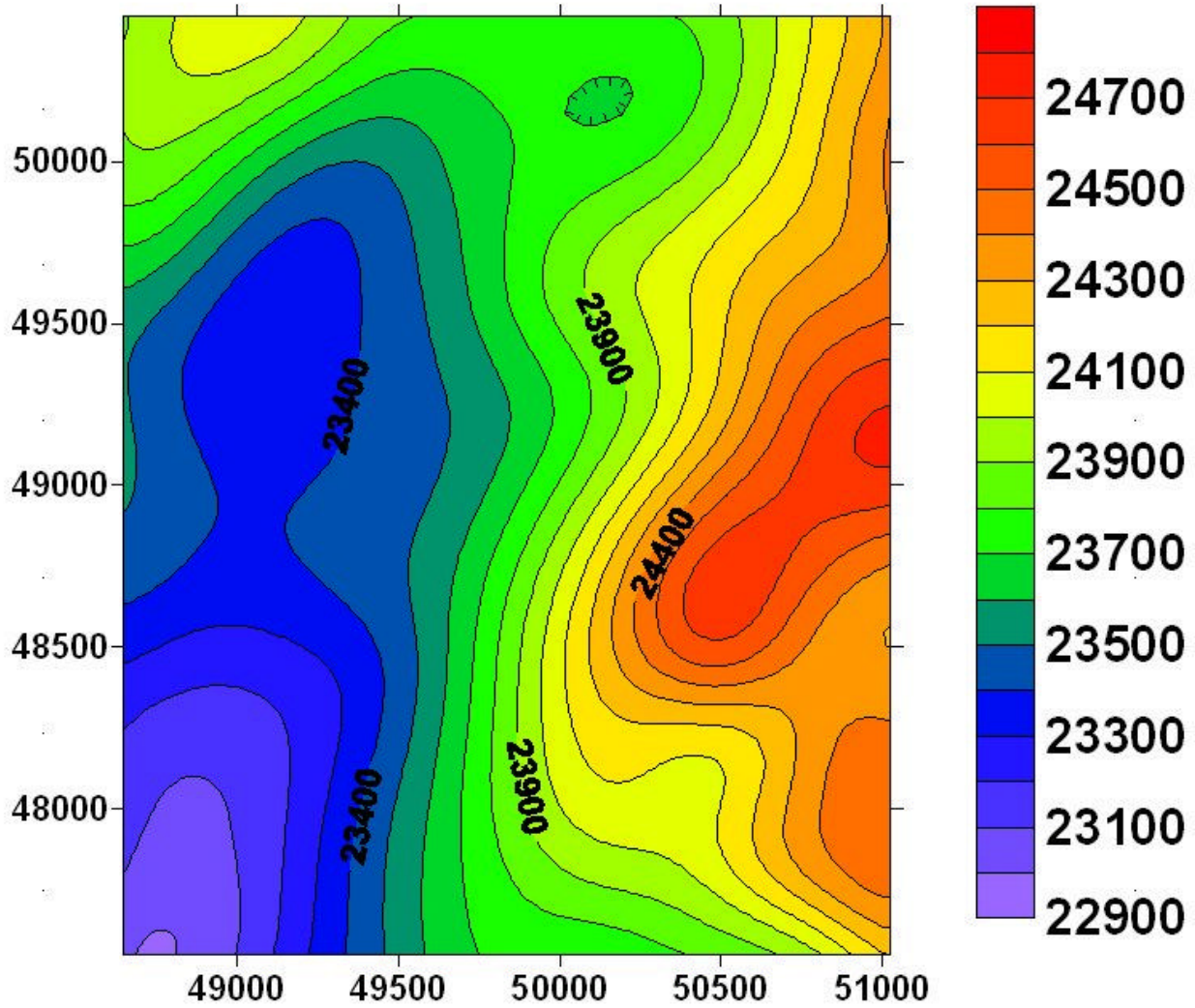
magnetics from the shallow layer after nuking a bunch of the E-W power spectrum



Magnetic signal from equivalent source layer at a depth of about 129 meters (mfilt 32).



Magnetic signal from equivalent source layer at a depth of about 440 meters (mfil 31).



Magnetics without the contribution from the shallowest equivalent source layer.

