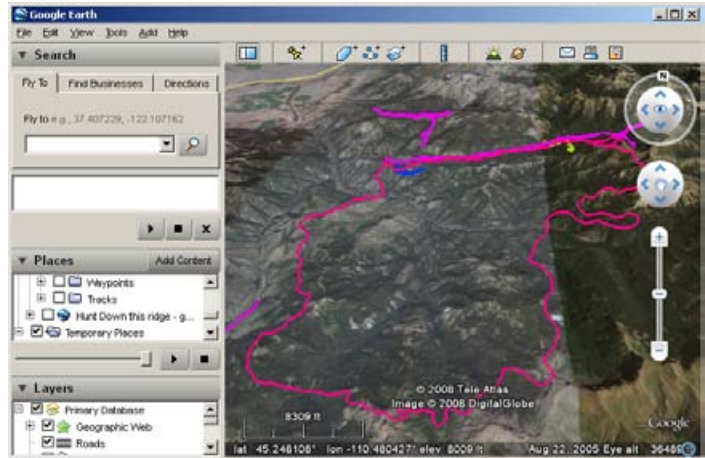


## Plotting .SHP Files on Google Earth – Fire Perimeter Example

### Getting Shape Files for Fire Perimeters

Geomac is the Geospatial Multi-Agency Coordination center for wild fire support:

- <http://www.geomac.gov/>
- From the Geomac site I got to a site that has the ESRI shapefile information for fires for Montana (and other states):



[http://rmgsc.cr.usgs.gov/outgoing/GeoMAC/2007\\_fire\\_data/Montana/](http://rmgsc.cr.usgs.gov/outgoing/GeoMAC/2007_fire_data/Montana/)

- From the state site, choose the specific fire site:

[http://rmgsc.cr.usgs.gov/outgoing/GeoMAC/2007\\_fire\\_data/Montana/Wicked%20Creek/](http://rmgsc.cr.usgs.gov/outgoing/GeoMAC/2007_fire_data/Montana/Wicked%20Creek/)

this site has the ESRI shape files and their associated files. You'll need these for the following conversion:

file\_name.shp  
file\_name.dbf

### Converting the ESRI shape files to Google Earth Format:

- I found the information I needed at:

<http://freegeographytools.com/2007/exporting-shapefiles-to-google-earth-iii-shp2kml>

- That lead to

<http://www.zonums.com/shp2kml.html>

where I downloaded SHP2KML.ZIP (freeware), scanned it for viruses, and ran it.

In **SHP2KML.EXE** select options to use Google Earth's native coordinates:

Input: file\_name.shp (it needed file\_name.dbf in the same directory).

Datum: WGS 1984

Units: Geographic

Field Label: FIRE\_NAME (might not be critical)

Single Symbol – click to change:

Icon, set color, scale=1

Line, width 2, opacity 100

Fill = outlined

Altitude Mode = clamped to ground

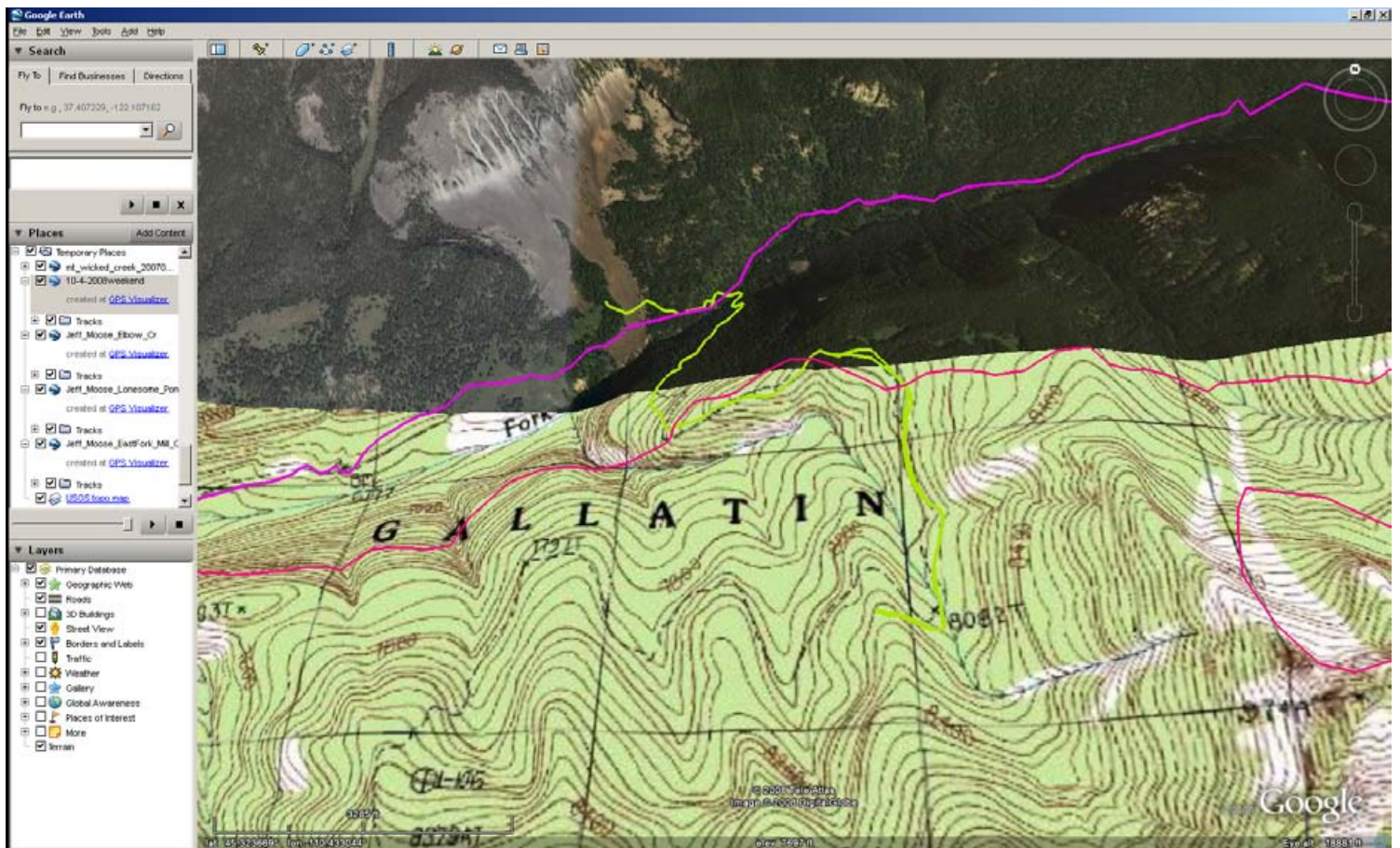
CREATE KML file

Open the .KML file in Google Earth and you have the fire perimeter.

## Put the Perimeter on a Google Earth USGS Topographic Overlay

Go to: [www.gpsvisualizer.com](http://www.gpsvisualizer.com)

- click “*Google Earth Overlays*”
- input the center (lat, long) of the Wicked Creek Fire complex
- Increase the map size to 15 x 15 km
- select “*USGS Topo Map*” (I use static images)
- click “*Create Overlay*”
- Save the overlay and open it in Google Earth.



This shows a section of the fire perimeter (magenta) overlaid on the USGS topo and the route we rode from the outfitter’s camp above Agnes Spring up into the burn (green line).