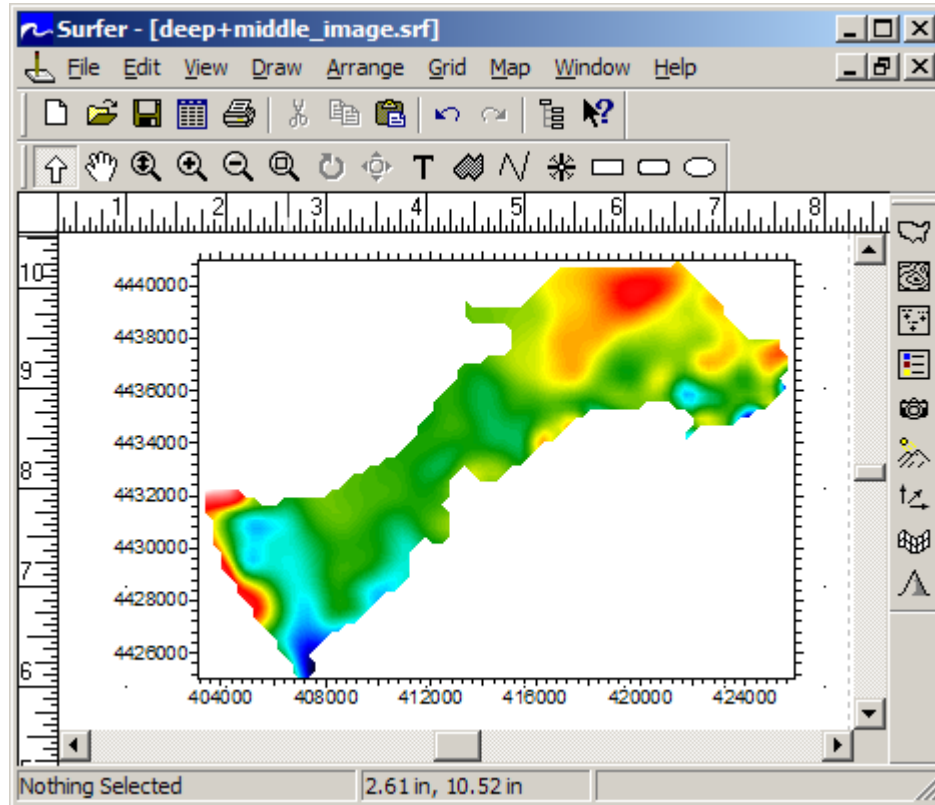


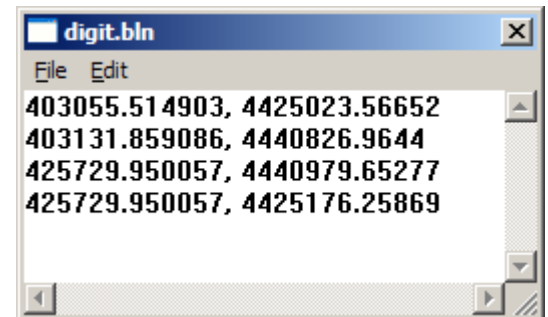
Overlaying a SURFER UTM Image on GOOGLE EARTH

In SURFER

- Create the SURFER image

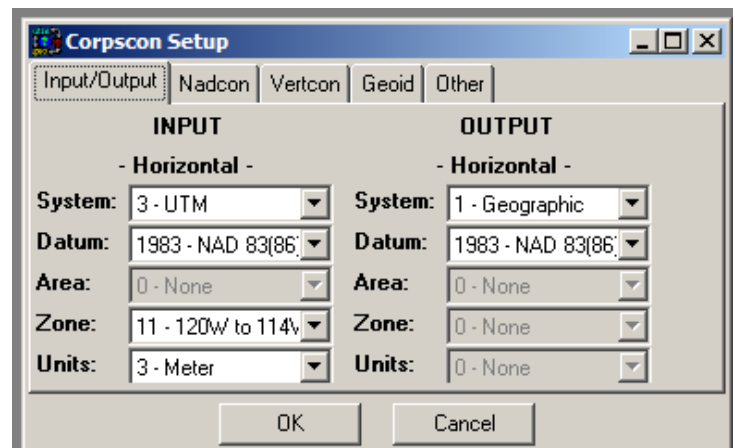


- Select your image
- Select Map/Digitize
- Digitize the corners (SW, SE, NE, NW) of the limits of the map
- Save the digitized results in a file like corners.dat
- Export the SURFER image as a .tif file to a convenient subdirectory.

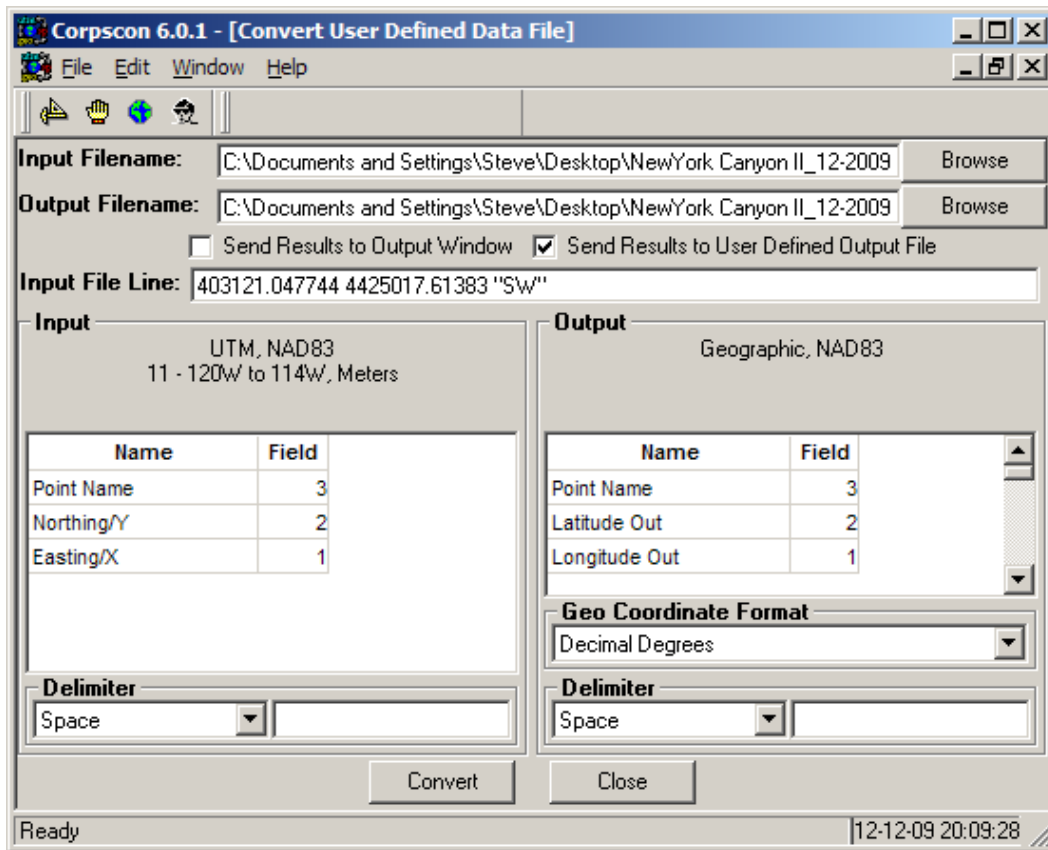


IN CORPSCON

- Use CORPSCON to transform the UTM coordinates of the corners to Latitude, Longitude and save that file as something like corners_LL.dat
- First do the Corpscon setup to make sure you are doing the conversion you want.



- Then, use the ‘Convert a User Defined File’ to get your results.

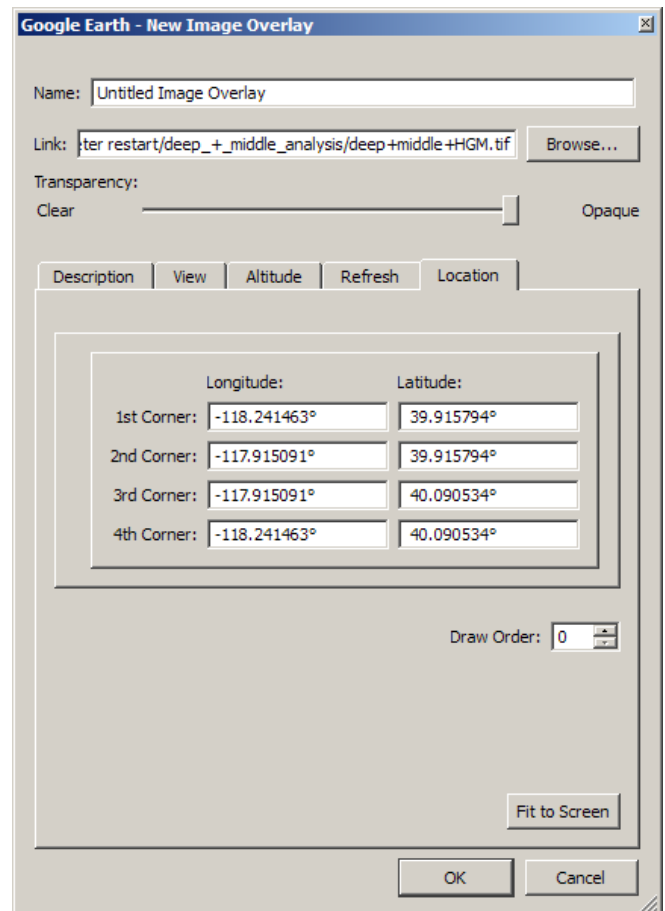


In an IMAGE EDITING PROGRAM (e.g. Paint Shop Pro, Adobe Photoshop, etc.)

- In your image editing program, crop the .tif right to the data boundaries (the places you digitized) and save it (again as .tif). If you leave image beyond where you digitized corners you will be squeezing a larger area into the digitized space.

In GOOGLE EARTH

- Add/Image Overlay
- Browse to your image
- Select the ‘Location’ tab
- Select ‘Convert to LatLonQuad



- Cut and past the coordinates from your corners_LL.dat file into the appropriate boxes in the LatLonQuad box (their order is SW, SE, Ne, NW; top to bottom).
- Hit 'OK' and you should have a rectified overlay.

